

File Association

Tips and Tricks

PROBLEM DESCRIPTION

How can you ensure that EFIT-V automatically always links to your preferred paint program (Paintshop, Photoshop or whatever..) ? How can you change the program if you need to ?

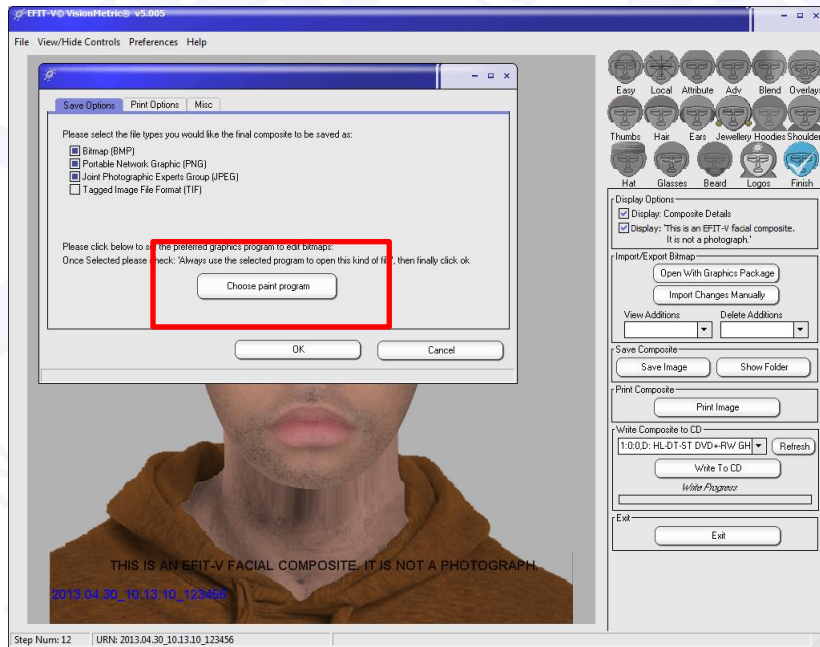
In EFIT-V version 5.04 and later, this can be done very easily.



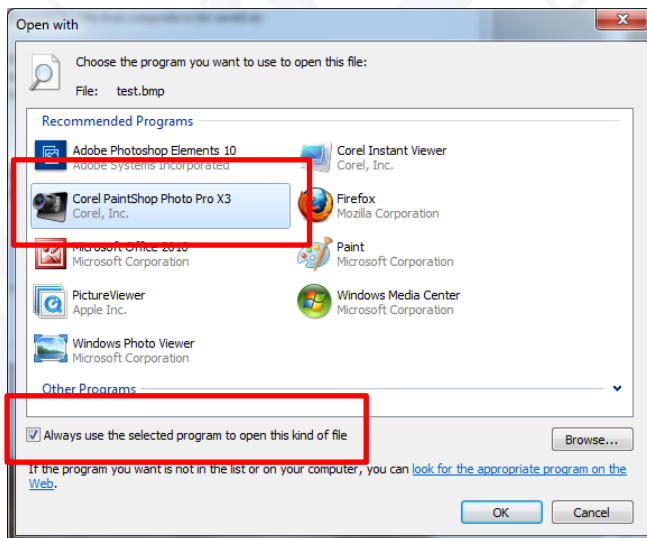
File Association

PROBLEM SOLUTION

Click on the **Preferences** menu in EFIT-V and then Click on the button 'Choose Paint Program'



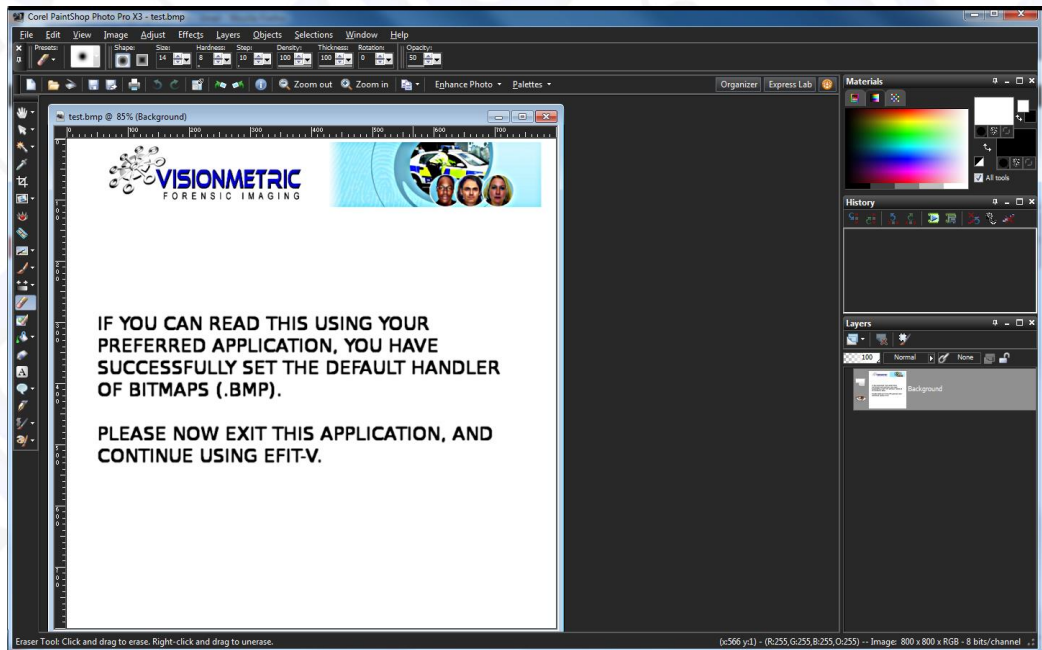
This will spawn a window listing all the programs on your computer which can handle image files



Select your chosen program and ensure that the box 'Always use the selected program to open this kind of file' is checked

File Association

Your chosen paint program will display a test image to confirm that the link has been made



Close your paint program to return to EFIT-V. Henceforth, it will always link to that program.

The method above is the easiest way to link to a chosen paint program. You can however also do this directly by changing the default settings of Microsoft Windows. You may need to do this if you have an older version of EFIT-V or are using E-FIT or (heaven forbid.. ☹) some other composite program.

Changing File associations in MSWindows:

If you want EFIT-V to link automatically to your chosen program you must make the corresponding file association for BMP images (bit maps) with that program.

For example, if I want files of type BMP to open in my chosen paint program e.g. PaintShop Pro, here is what I do:

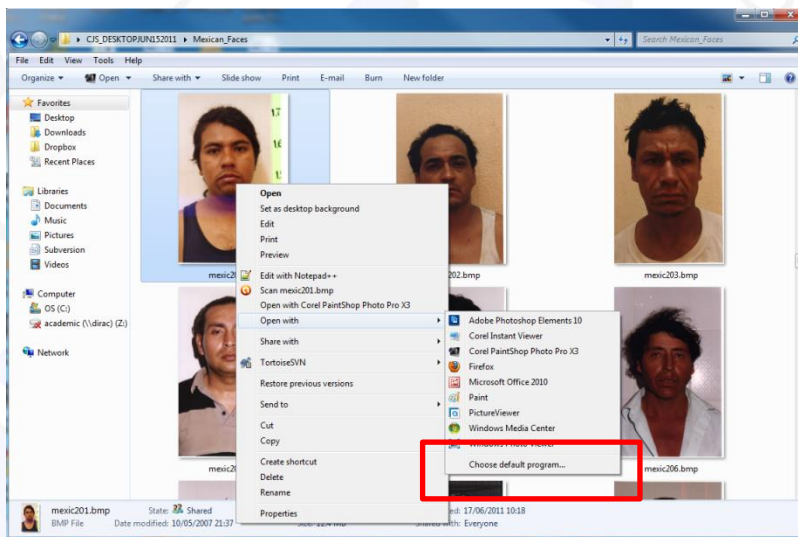
File Association

In Windows XP

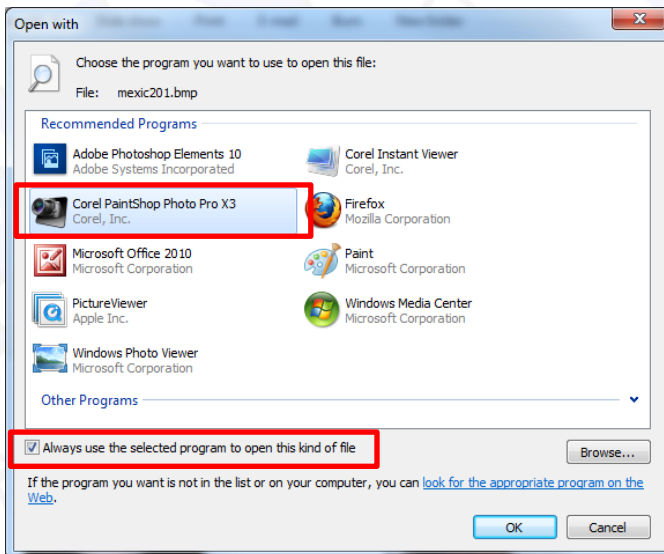
Open any Windows folder

In Windows 7

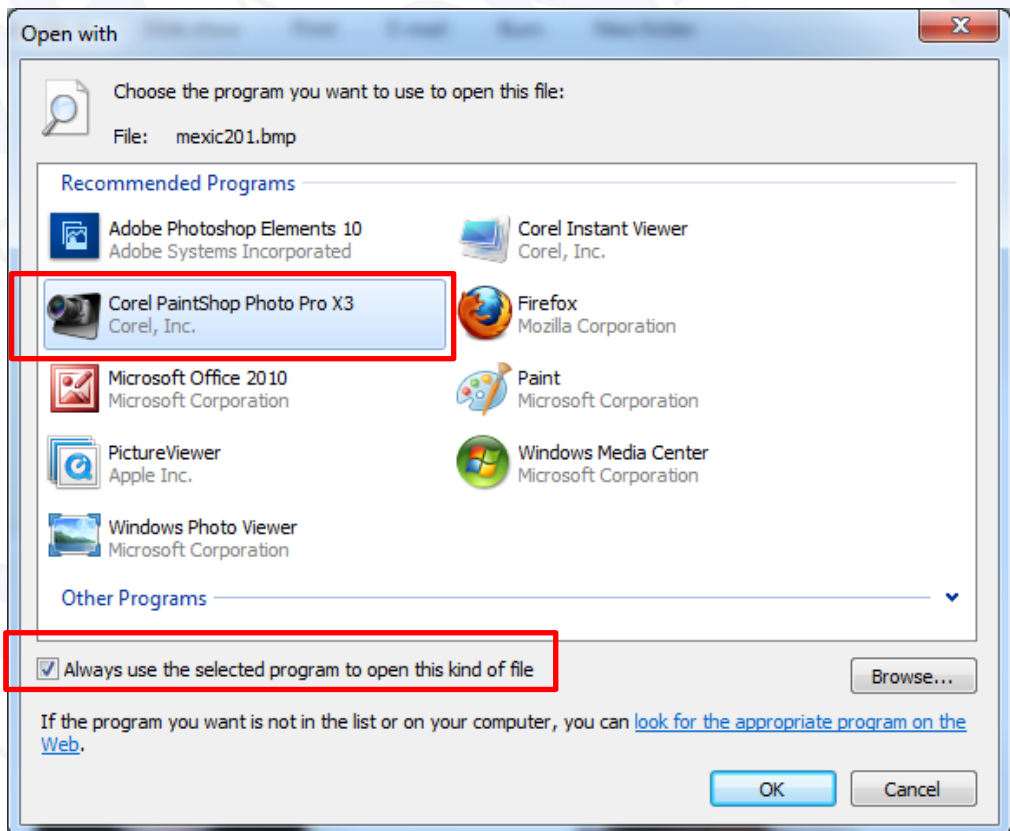
1. Find any image of type BMP on your computer.
2. Right click on the image to bring up the following menu and left click on "Open With" and "Choose default program" -



3. This will bring up a window listing all the programs on your computer which can open and display BMP type images.



File Association



Click directly on the program you want AND MAKE SURE THAT THE BOX **"Always use the selected program to open this kind of file"** is ticked (click in the box to do this).

Finally, click on the OK button at the bottom right.

From now on all BMP images will open in Paintshop. An exactly similar process may be followed for other image file types.

