

Two Items From A Single Category

PROBLEM DESCRIPTION

In some cases the composite image may require two items from the same category e.g.: earrings and a necklace both found in the Jewellery category.

This example demonstrates step by step how to achieve this.

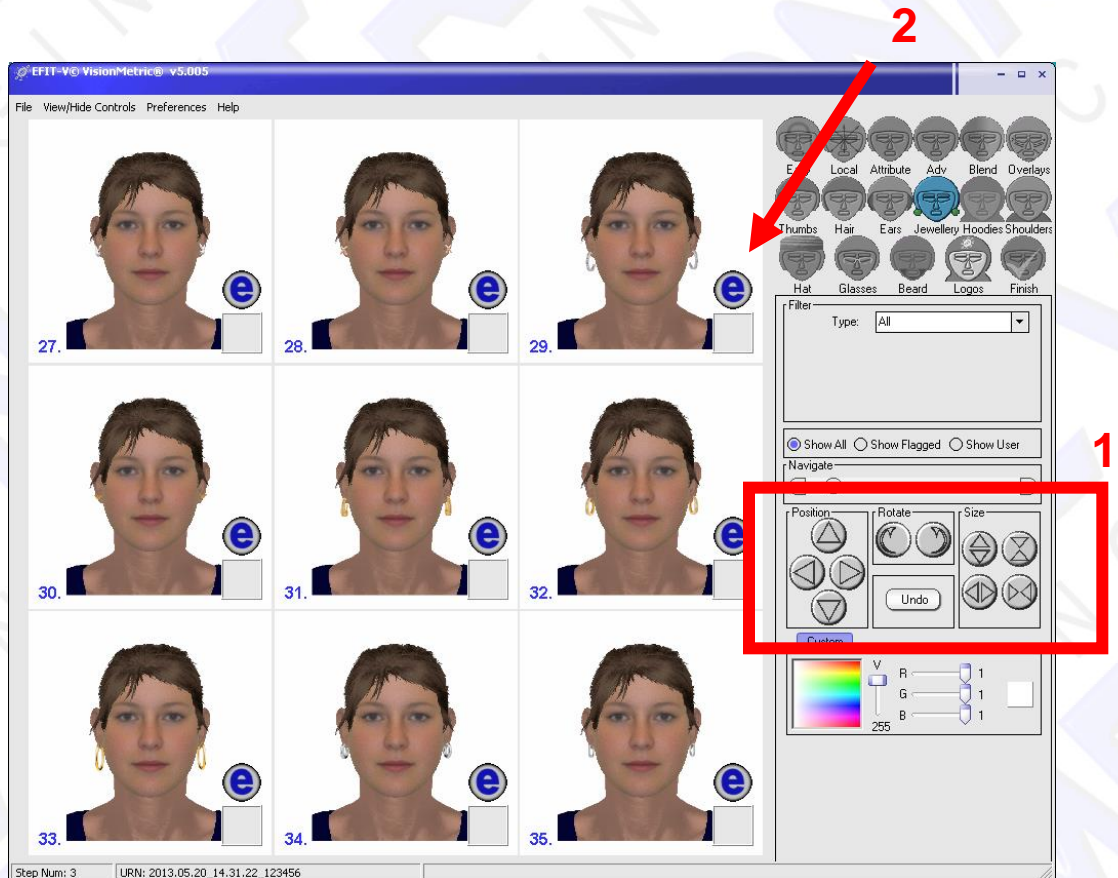


Two Items From A Single Category

Tips and Tricks

PROBLEM SOLUTION

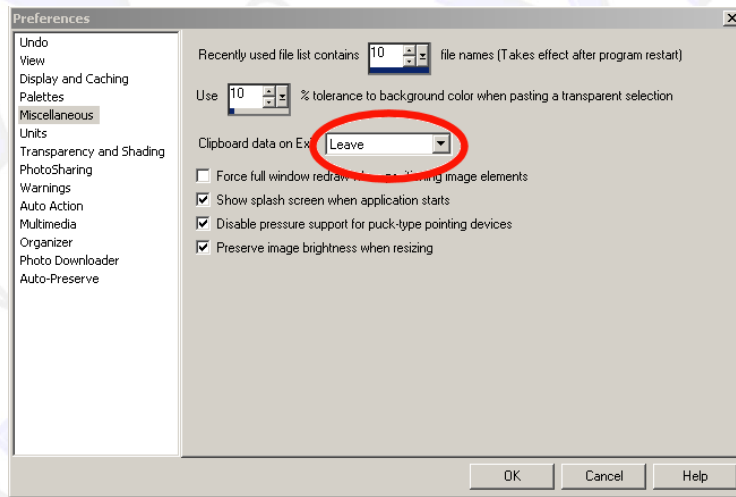
- Start EFIT-V as normal.
- Locate the first item desired (in this case earrings).
- Ensure you use the 'position and size arrow keys' (1) to line the item in the correct position i.e. in this case align both earrings on the ears.
- Click the Edit (e) (2) button to load your graphics program of choice.



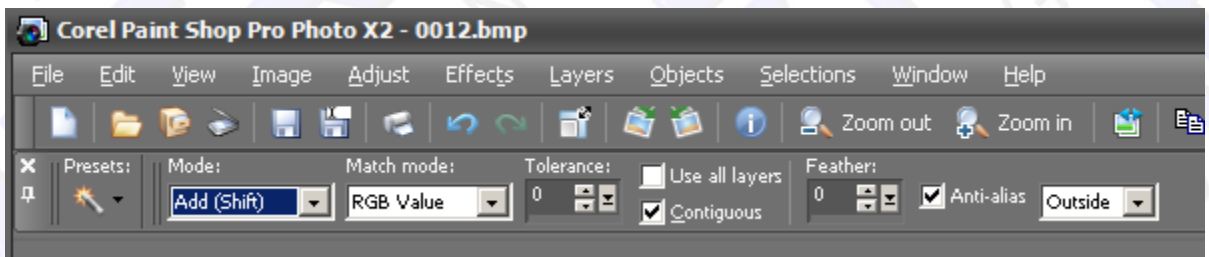
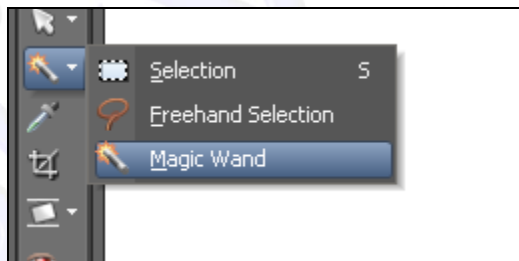
Two Items From A Single Category

- Once the graphics program is open, tell the graphics software to save items on the clipboard when the program is dismissed. For PaintShop Pro click:

File>>Preferences>>General Program Preferences>>Miscellaneous>>Leave



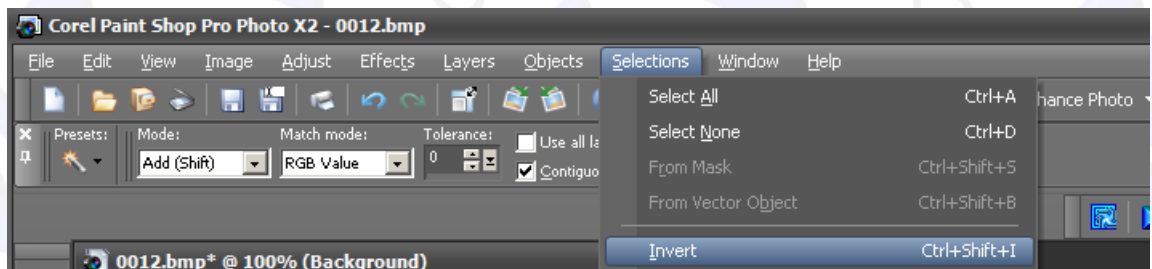
- Select the magic wand tool and set the wand to the below settings.
Mode: Add; Match Mode: RGB; Tolerance: 0; Feather: 0; Outside



Two Items From A Single Category

Tips and Tricks

- Using the selected Wand tool click in the white area of the canvas. Go to the menu >>Selections and click on >>Invert (Ctrl+Shift+I).
- Go to Edit>>Copy. Close the program and Save the Selected.



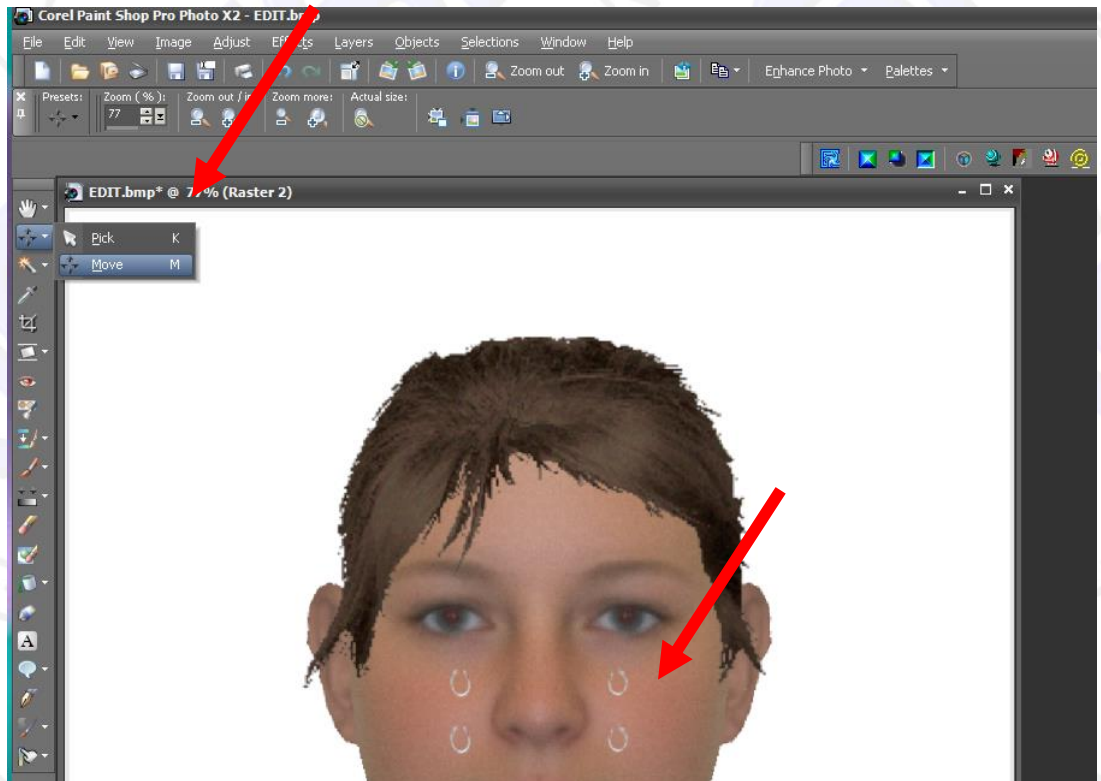
- Back in EFIT-V, locate the second item desired (in this case a necklace). Ensure you use the 'position and size arrow keys' (as shown on previous slide) to line the item in the correct position around the neck.
- Once the necklace is aligned click on the desired face. Select: Finish. Select: Open with Graphics Package.
- In the Graphics Package select the Edit menu and Paste as New Layer. Repeat this step twice i.e. there will be 4 earrings.



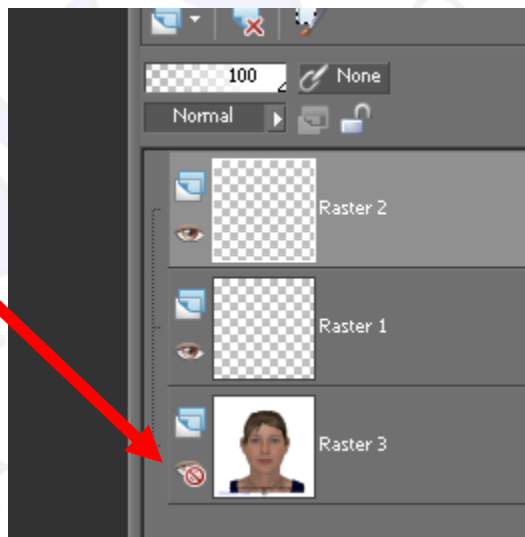
Two Items From A Single Category

Tips and Tricks

- The layers are pasted on top of each other. In order to see the 4 earrings select the Move tool and separate the two sets of earrings



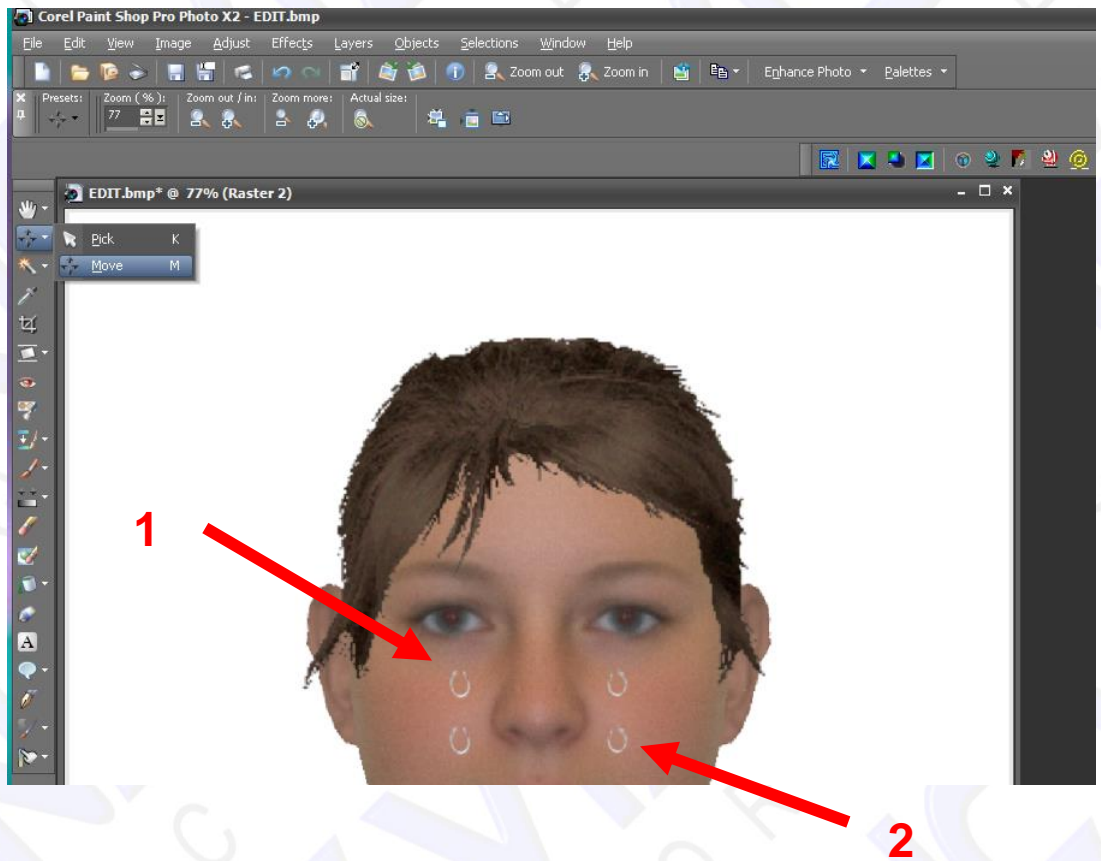
- Hide the layer with the composite image.



Two Items From A Single Category

Tips and Tricks

- Click on the layer called Raster 1. Select the Eraser Tool (Opacity 100) and erase the left earring (1).
- Click on the layer called Raster 2. Select the Eraser (Opacity 100) Tool and erase the right earring (2)



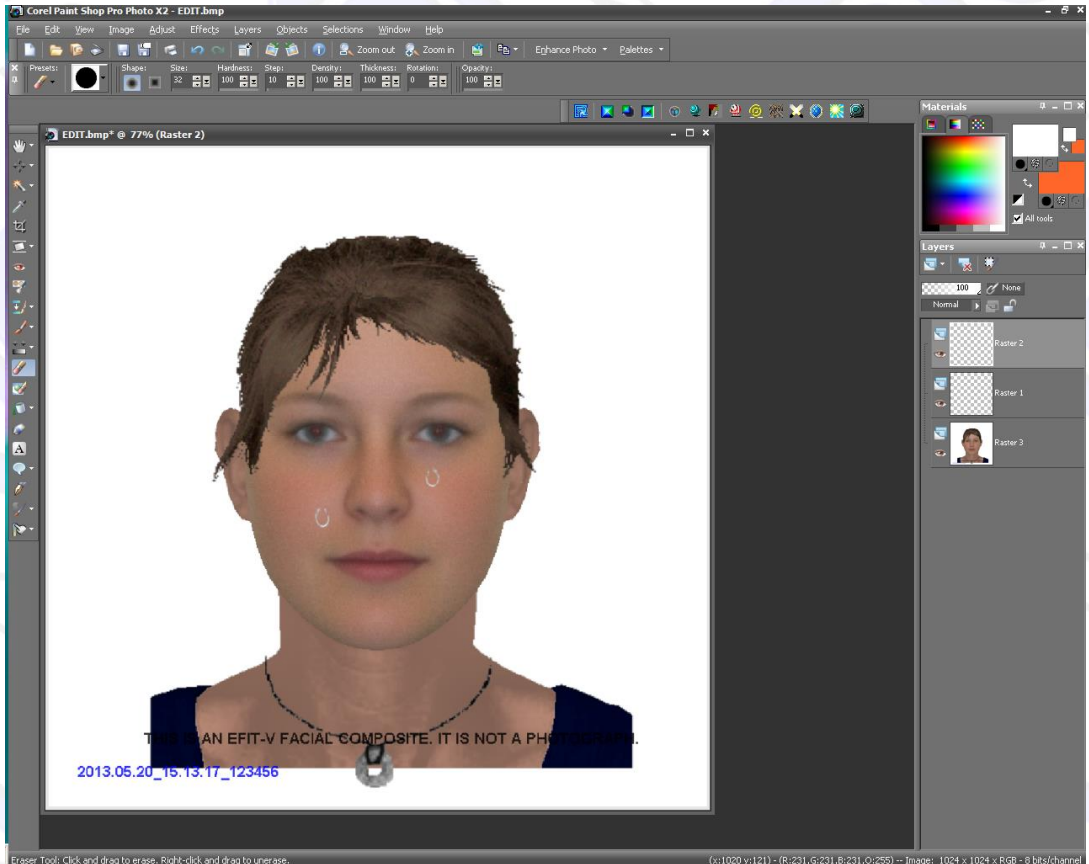
- Unhide the layer with the composite image.
- Click on the layer called Raster 1. Select Move tool. Select the right earring and move it so it is on the right ear lobe.
- Click on the layer called Raster 2. Select Move tool. Select the left earring and move it so it is on the left ear lobe.



Two Items From A Single Category

Tips and Tricks

- Unhide the layer with the composite image.
- The image should now look like the one below.



- Click on the layer called Raster 1. Select Move tool. Select the right earring and move it so it is on the right ear lobe.
- Click on the layer called Raster 2. Select Move tool. Select the left earring and move it so it is on the left ear lobe.



VISIONMETRIC
FORENSIC IMAGING

Tel: +44 (0)1227 824667
Fax: +44(0)1227 824667
Email: efit@visionmetric.com
Web: www.visionmetric.com

VisionMetric Limited
Kent Enterprise Hub
University of Kent
Canterbury, Kent CT2 7NJ

Two Items From A Single Category

- Once done close the application and choose >>Save Selected >>Yes >>Ok.
- EFIT-V will open once again, where you can choose to print or save the final composite.

