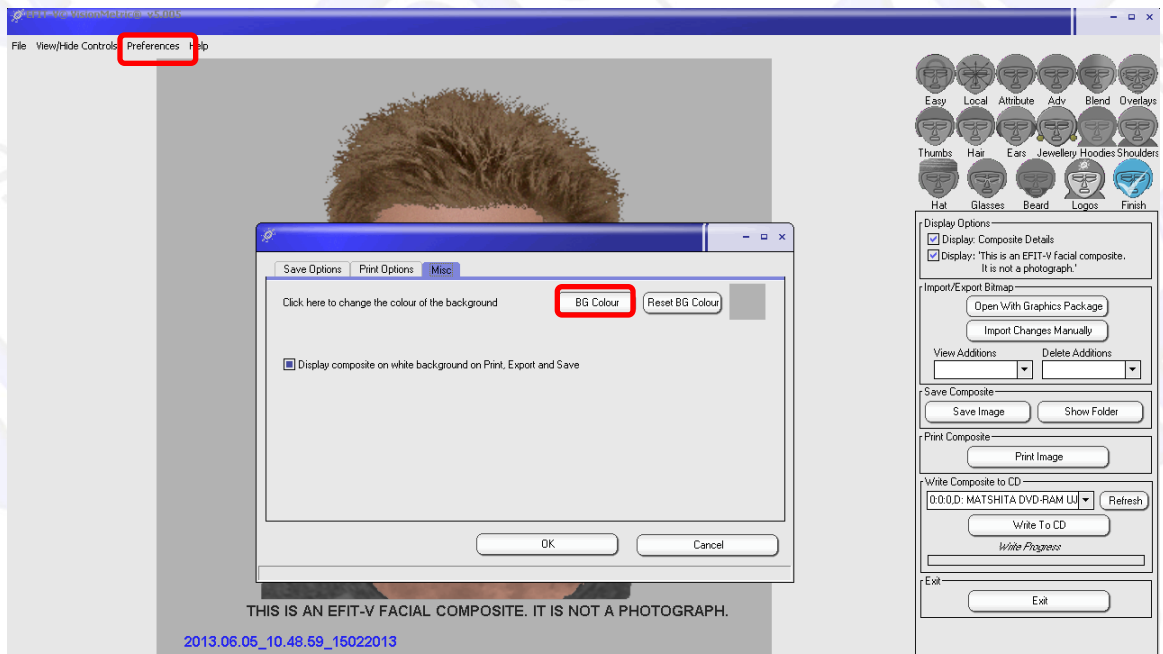


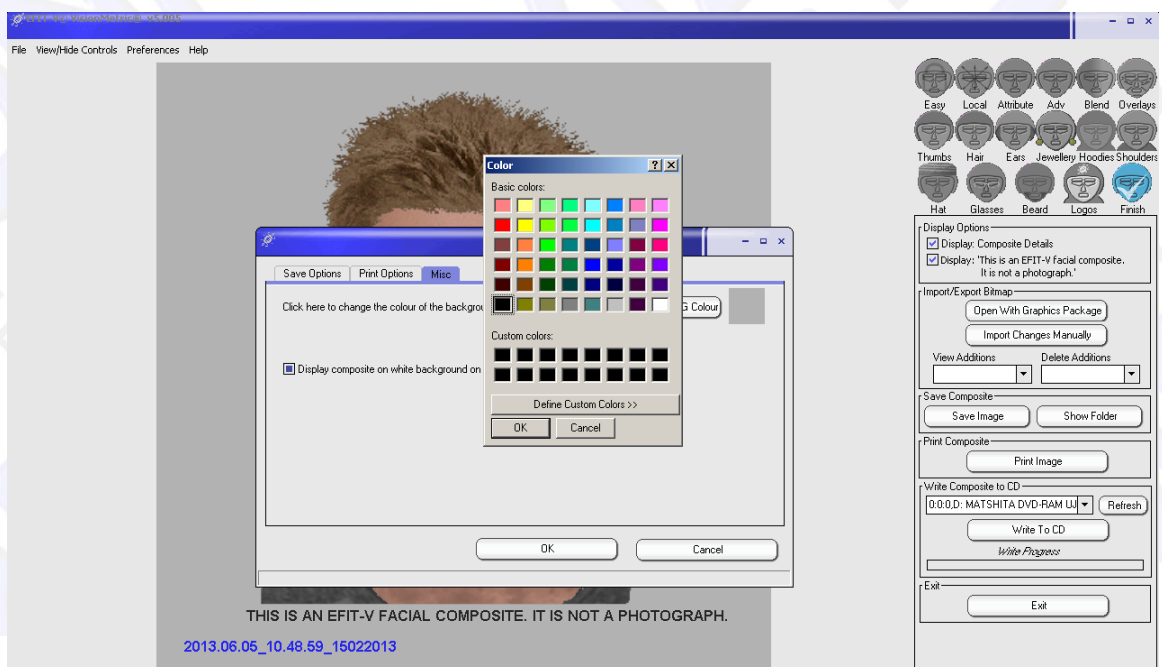
CHANGING THE EFIT-V BACKGROUND COLOUR

Go to the **Preferences** drop-down menu, click on **Misc**, then click the button labelled **BG Colour**.

(Ignore display composite on white background on print export and save)



Now select the white colour swatch and press **OK**.



You should now have a white background.



EFIT-V will operate with this white background and images will be saved and exported with it.

