

How to update your EFIT6 License key (Dongle)

Remote update of dongle

To remotely update your license key, 2 conditions are needed –

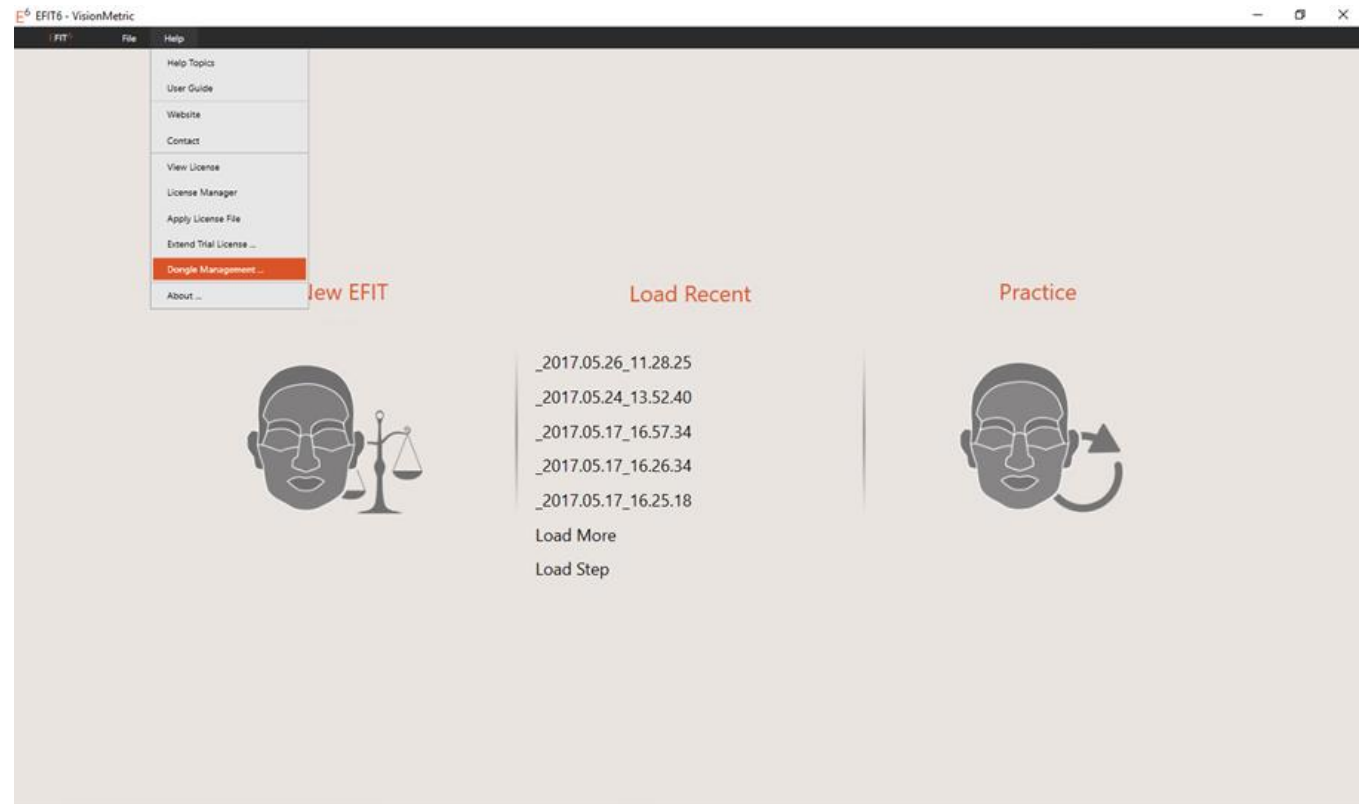
1. You need to have EFIT6 installed on your computer.
2. You need an internet connection.

Please be clear that updating the dongle does not necessarily have to be done on the same computer on which you intend to use EFIT6 . **Any** computer will do as long as it has EFIT6 and an unrestricted internet connection.

[If you can't access the internet unrestricted, contact us on efit@visionmetric.com and we can arrange to send you the required codes]

STEP 1

- Open EFIT6
- Select **Help**
- Select **Dongle management**



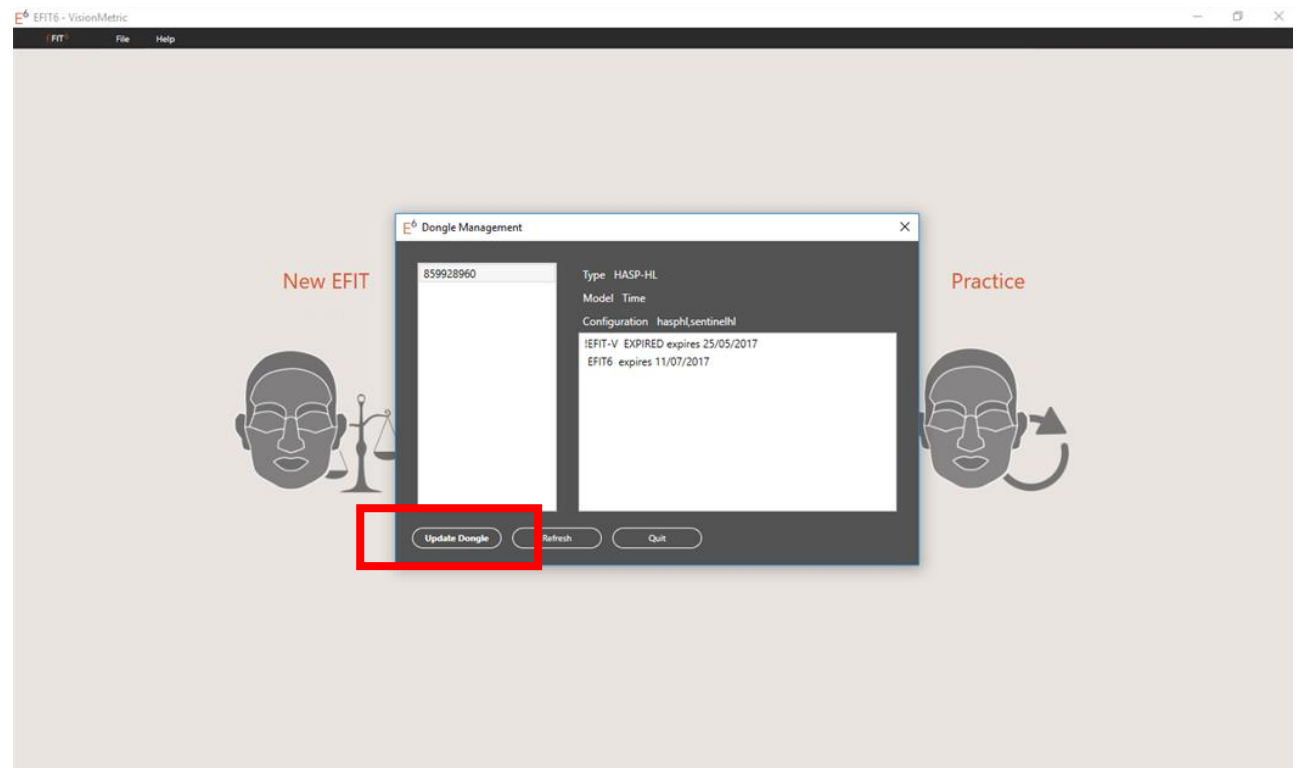
STEP 2

The Dongle Management Window appears. This gives you

- i) The internal dongle ID number (in the example, this is 859928960)
- ii) The products for which your dongle is currently encoded.

Select **Update Dongle** and the dongle will begin updating over the internet.

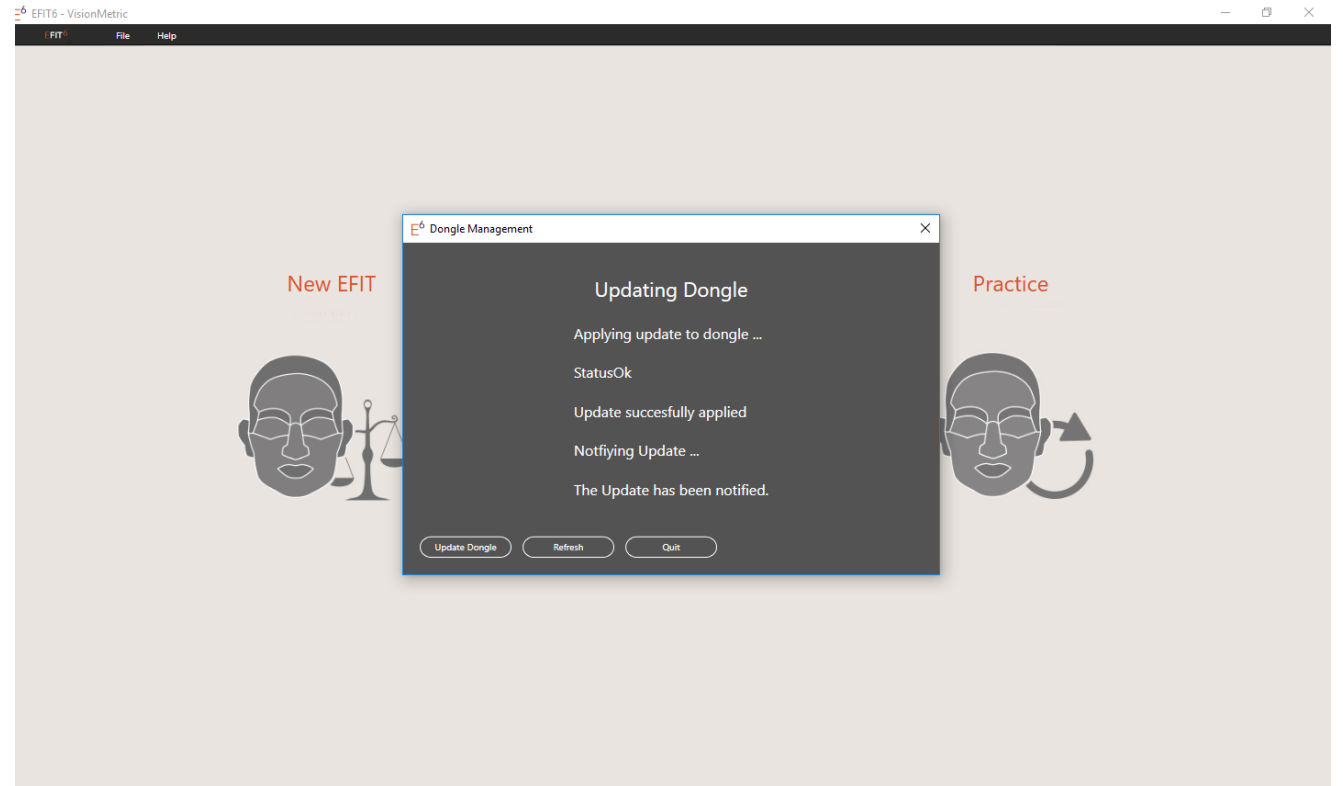
- Select **Update Dongle**



STEP 3

The dialog box announces the status and the completion of the update. Typically it takes just a few seconds.

DONE !



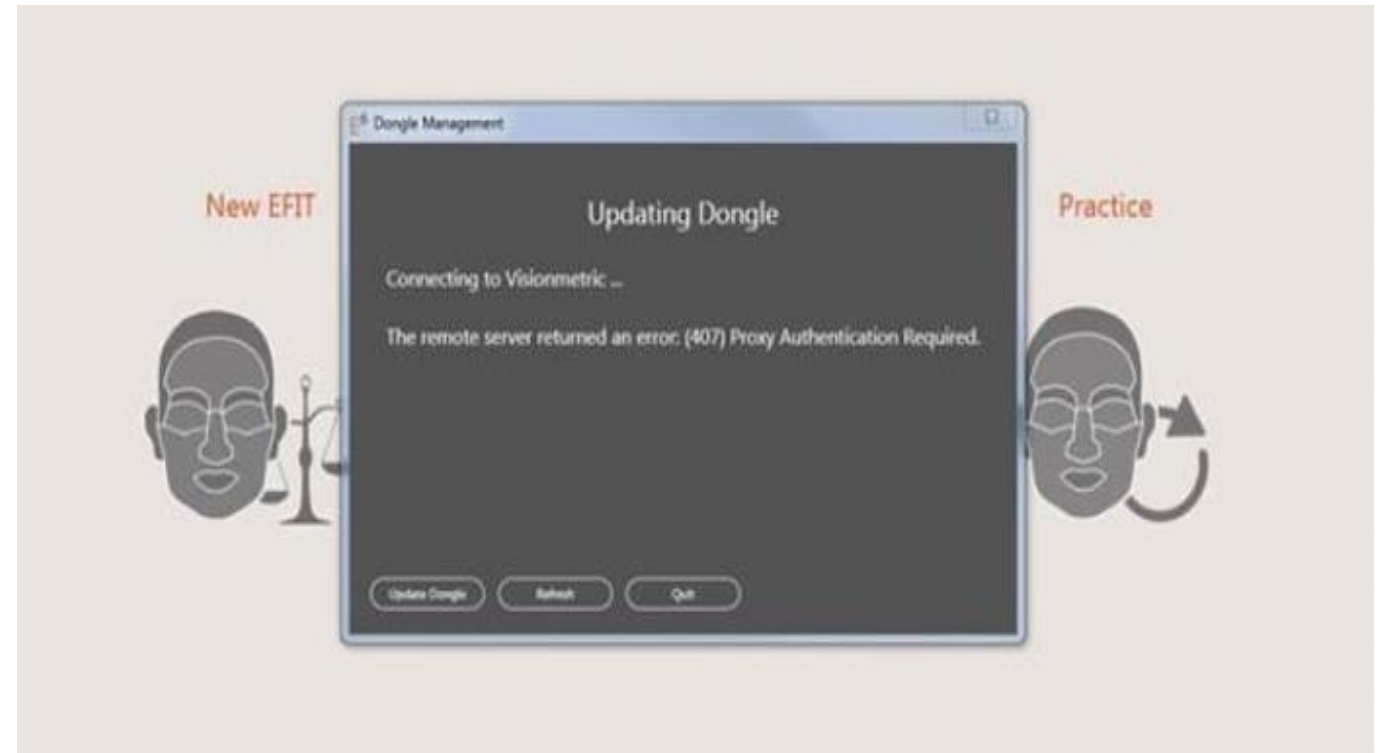
IF HOWEVER THIS *FAILS*, THEN READ ON....

Updating dongle by applying an update file

By far, the most likely reason for failure is that the firewall within your institution has automatically blocked access to the update on the Visionmetric server (see picture).

You then have 2 basic choices –

- i) Follow the instruction on slides 1-3 **on a computer *without a firewall***. You can easily do this on a personal laptop at home.
- ii) **Request the update files to be sent by email to you and then follow the very simple procedure** overleaf

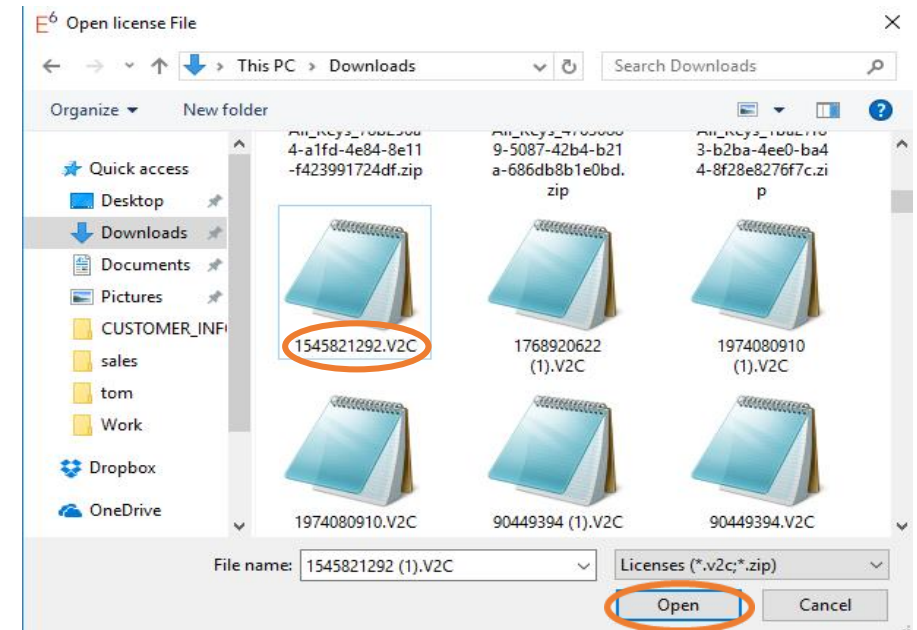
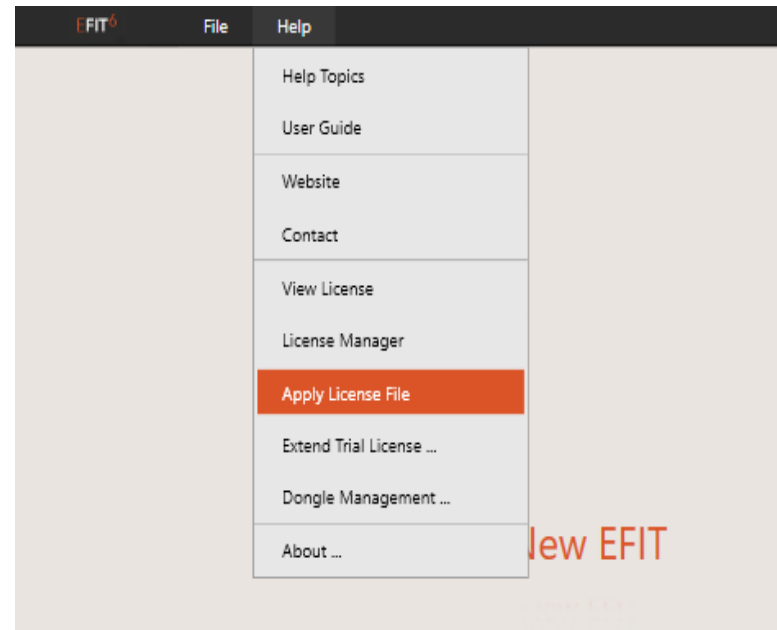


For this method..

1. You need to have EFIT6 installed on your computer.
2. You need the update file(s) to have been emailed to you by Visionmetric. They are of the type v2c (vendor to customer)

STEP 1

- Open EFIT6
- Select **Help**
- Select **Apply License File**
- Find the file on your system and open



EFIT6 will confirm the successful application of your update.